

MULTI-BEAM PLUS POWER CONNECTORS

BENEFITS

- Highest current per power contact at a maximum of 100A per four pins
- High power and signal density saves space and reduces power consumption
- Scalable and flexible design

APPLICATIONS

- Data Centers
- Telecommunications
- Industrial Automation
- Power Systems

TE Connectivity's MULTI-BEAM Plus power connectors address the market need for higher power and higher performance with the highest current per power contact up to 100A/contact with four adjacent power contacts. This higher power and signal density saves space and reduces power consumption.

MULTI-BEAM Plus connectors are the next evolution of our MULTI-BEAM XLE connectors. They share the same low profile dimension and enable the same airflow through the system.

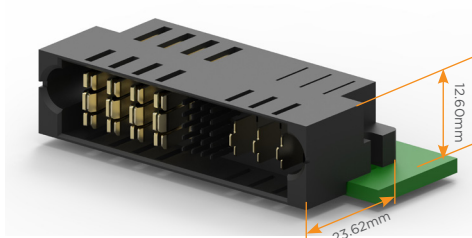
Like our MULTI-BEAM XL, MULTI-BEAM XLE, and MULTI-BEAM HD power connectors, the scalable and modular design of MULTI-BEAM Plus connectors also supports greater flexibility in configuration and PCB design.

MULTI-BEAM Plus Power Connectors

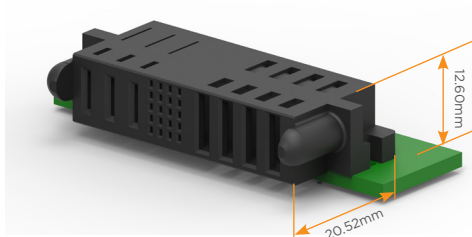
AVAILABLE PART NUMBERS

TE Part Number	Connector Type	Pin Configuration
2334531-2	R/A Plug	20S + 6P
2334571-1	R/A Receptacle	20S + 6P
2334530-4	R/A Plug	5LP + 24S + 2P
2334570-4	R/A Receptacle	5LP + 24S + 2P
1-2334530-2	R/A Plug	5LP + 25S + 2P
2334570-8	R/A Receptacle	5LP + 25S + 2P

CONNECTOR DIMENSIONS



R/A Plug



R/A Receptacle

Technical Detail

- Current rating:
 - 100A max. per contact with four adjacent power contacts
 - 140A max. per contact
- Durability: 250 mating cycles max.
- Mechanical Shock: 50G per EIA-364 standard
- Vibration: 4.9G, 20-500Hz
- Operating temperature: -40°C to 125°C
- Low mating force:
 - 7.12N max. per power contact
 - 1.0N max. per low power contact
- Insertion force into PCB:
 - The insertion force per eye-of-needle (EON) is 50N max.
- PCB Thickness:
 - Press-fit type: 1.5mm min.
 - Solder type: tail length - 0.4mm max.
- Material: High conductivity copper alloy and high temperature resin with RoHS compliance
- Product Specification: [108-128074](#)
- Application Specification: [114-128075](#)

TE Technical Support Center

USA:	1.800.522.6752
Canada:	1.905.475.6222
Mexico:	52.0.55.1106.0800
Latin/S. America:	54.0.11.4733.2200
Germany:	49.0.6251.133.1999
UK:	44.0.800.267666
France:	33.0.1.3420.8686
Netherlands:	31.0.73.6246.999
China:	86.0.400.820.6015

te.com

MULTI-BEAM XL, MULTI-BEAM XLE, MULTI-BEAM HD, MULTI-BEAM Plus, TE Connectivity, TE Connectivity (logo) and Every Connection Counts are trademarks owned or licensed by the TE Connectivity family of companies.

All other logos, products and/or company names referred to herein might be trademarks of their respective owners.

The information given herein, including drawings, illustrations and schematics which are intended for illustration purposes only, is believed to be reliable. However, TE Connectivity makes no warranties as to its accuracy or completeness and disclaims any liability in connection with its use. TE Connectivity's obligations shall only be as set forth in TE Connectivity's Standard Terms and Conditions of Sale for this product and in no case will TE Connectivity be liable for any incidental, indirect or consequential damages arising out of the sale, resale, use or misuse of the product. Users of TE Connectivity products should make their own evaluation to determine the suitability of each such product for the specific application.

© 2019 TE Connectivity Ltd. family of companies All Rights Reserved.

3-1773982-9 09/19